

# GLIDE

Electric Sit-Stand





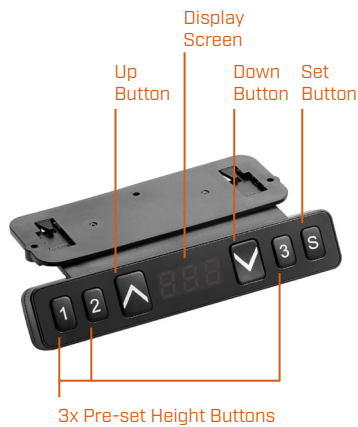
Single



Back to back



Single workstation with screen and cable tray



Standard control panel



Return kit



Back to back workstation with PET panels

## FEATURES

- Certified to ANSI/BIFMA X5.5\_2014
- Compliant with Australian electrical standards AS/NZS 61558.2.16.2010
- Rectangle leg profile
- Black or white satin powdercoat
- Telescopic beams
- Adjustable levelling glides
- Dual motor (individual motor per leg)
- Lockable max height range
- Anti-collision
- 100kg rating
- 5 Year Warranty

## SPECIFICATIONS

Back to back height range:

630 - 1280mm inc. 25mm worktop

Freestanding height range:

643 - 1293mm inc. 25mm worktop

Feet lengths:

586mm & 738mm [T Feet]

Frame options: Fixed height

(indent only), 120° Configuration

(made to order), 90° [L shape]

configuration [made from stocked straight frame with a return kit]

Available with (made to order):

Cable trays or cable baskets,

worktops, screens, power/data